



GOBIERNO DE
CHILE

Superintendencia de Servicios Sanitarios - SISS

CHILEAN GOOD PRACTICES ON UNIVERSAL ACCESS TO WATER AND SANITATION

Chile Facts and Figures



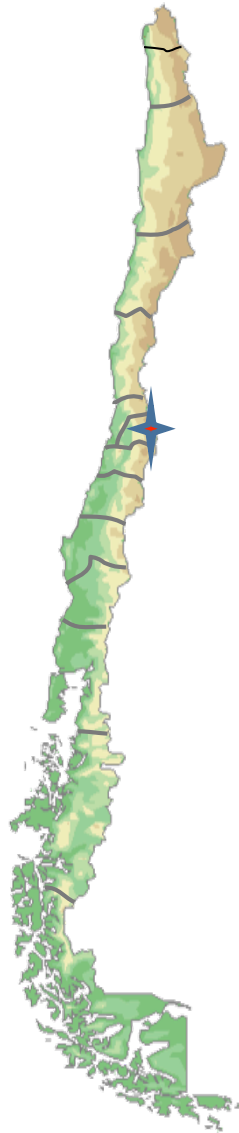
Relevant Social Facts

Population (June 2010 estimates)

- Total: 17.094.275
- Urban: 14.868.172 (87.5 %)
- Rural: 2.226.103

Three most populated regions:

- Metropolitan Region: 6.883.563 (40,27 %)
- Eight Region (11,9 %)
- Fifth Region (10,3%)



Chile Facts and Figures

Relevant Economic Facts

- Gross domestic product based on purchasing power parity (PPP) in MM US\$:

2009	2010 est.
243.142	257.546

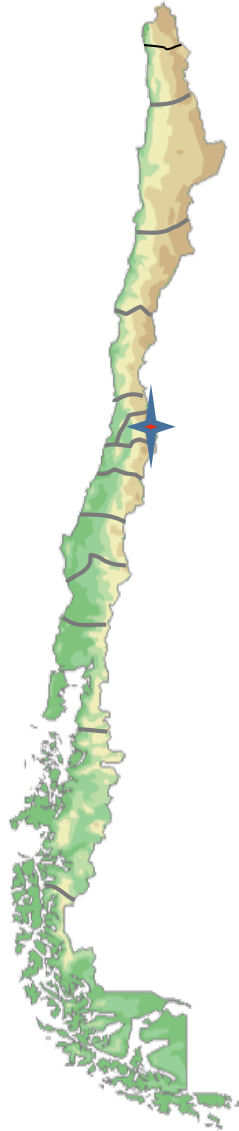
- Gross domestic product based on PPP per capita:

2009	2010 est.
14,315.758	14,982.253

Source: IMF World Economic Outlook Database October 2010

Government and Administration:

- Democratic unitary state run by a presidential republican system.
- Administratively divided into 15 regions
- Communes are administered by municipalities, each with its own mayor and council elected for four year terms.



Chile Facts and Figures

Percentage of population with access to piped water and sanitary sewers:

Urban areas (urban population estimated 2009)

- Piped water: 99,8 %
- Sewerage system: 95,6 %
- Treated wastewater: 83,3 %
- Served by 51 companies. 19 of them serve 98.8 % of the urban population

Rural areas(related to concentrated rural areas)

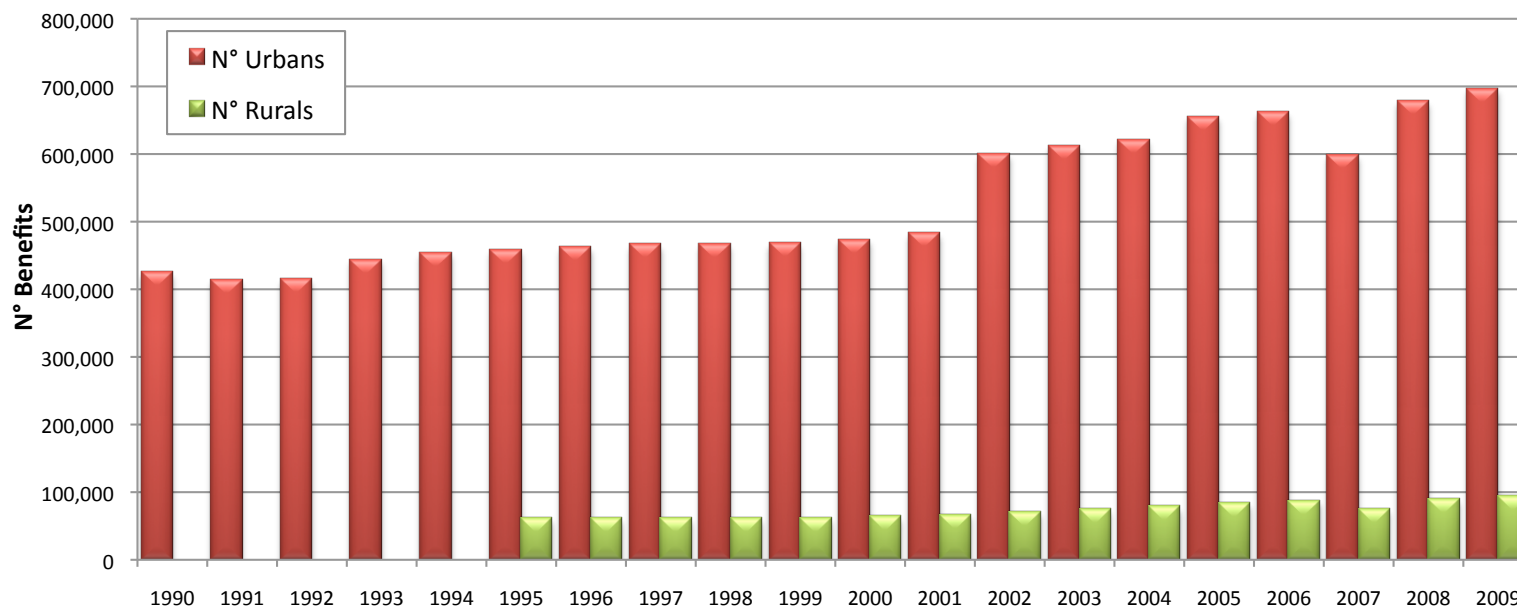
- Piped water: 96 a 98 % serving app. 1.447.871 people
- Sewerage system: 12 %
- Treated wastewater: 12 %
- Served by 1578 rural systems (59 % with 200 connections or less)

Source: Ministry of Public Works and Drinking Water and Sewerage Superintendency

N° of household recipients estimated each annual budget

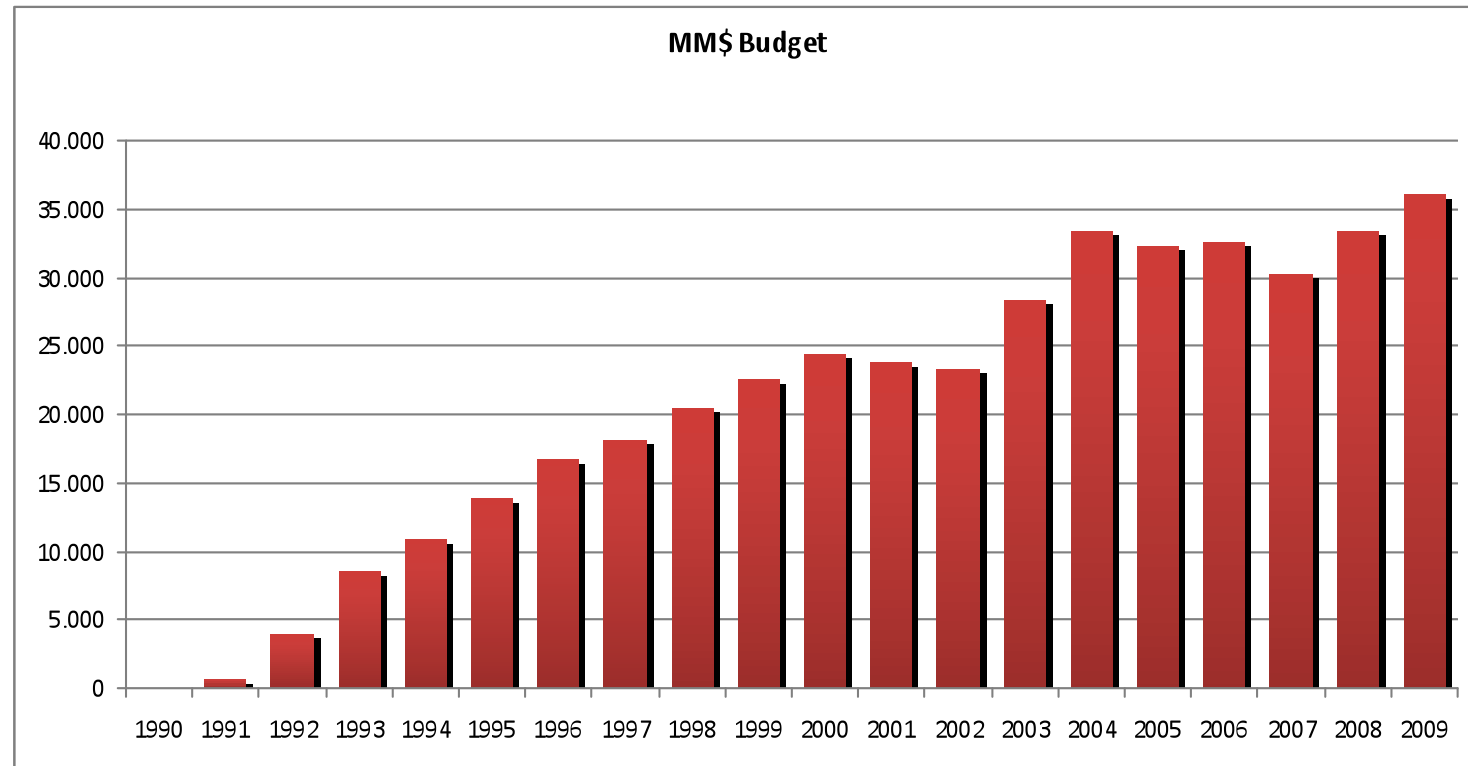


GOBIERNO DE
CHILE



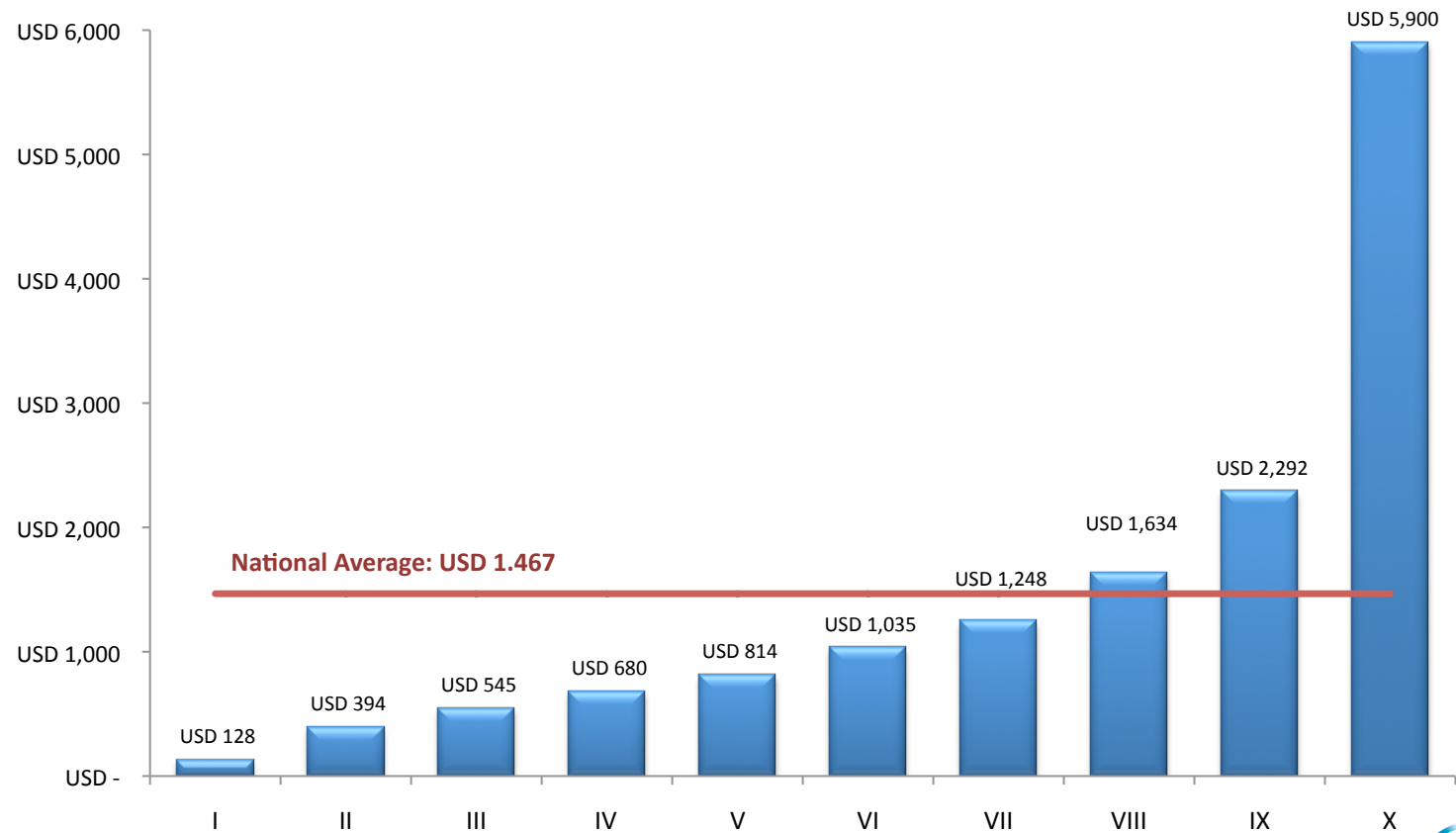
Source: MIDEPLAN (Chilean Ministry of Social Planning).

Annual budget



Source: MIDEPLAN (Chilean Ministry of Social Planning).

National Average Household Income Deciles

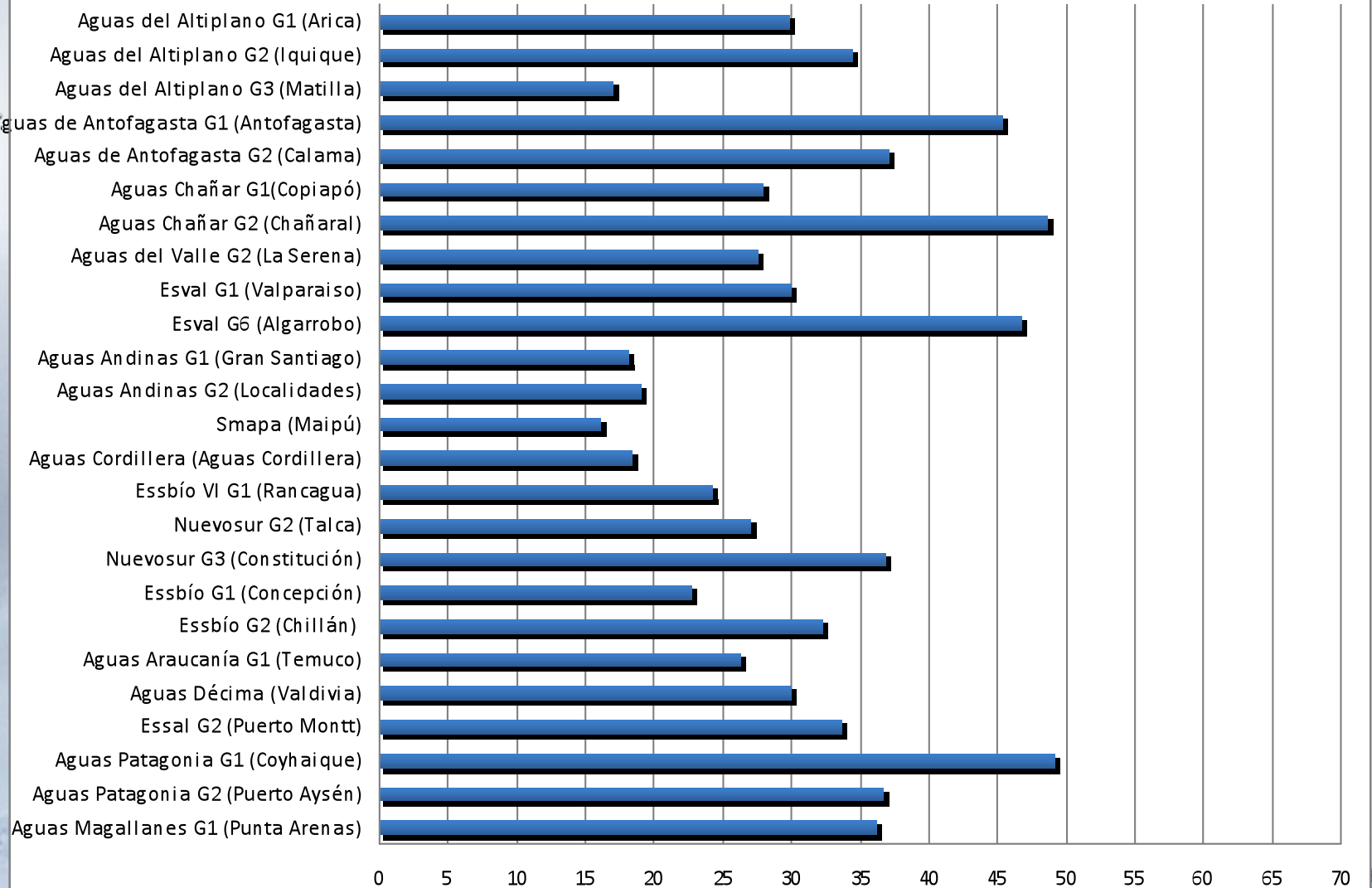


Source: MIDEPLAN/CASEN survey 2009 (Chilean Ministry of Social Planning)

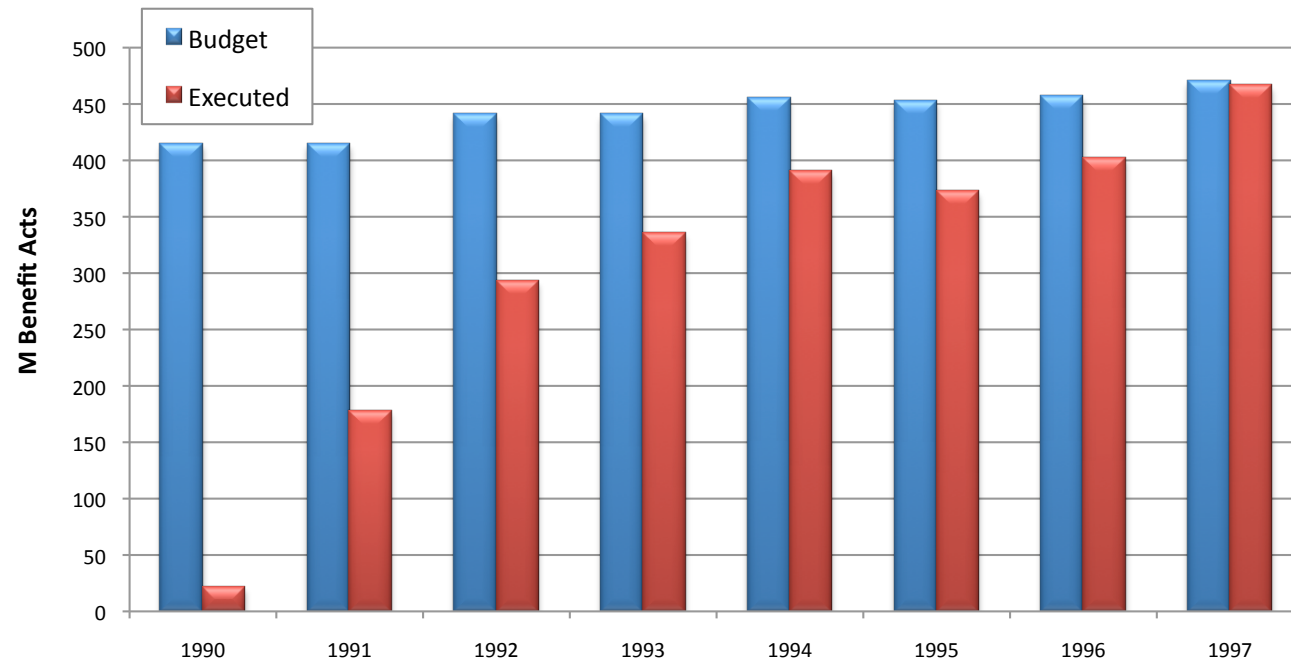
Typical Drinking Water and Sewage Services Bill (15 mts³ monthly)



GOBIERNO DE
CHILE



Money spent in drinking water subsidies

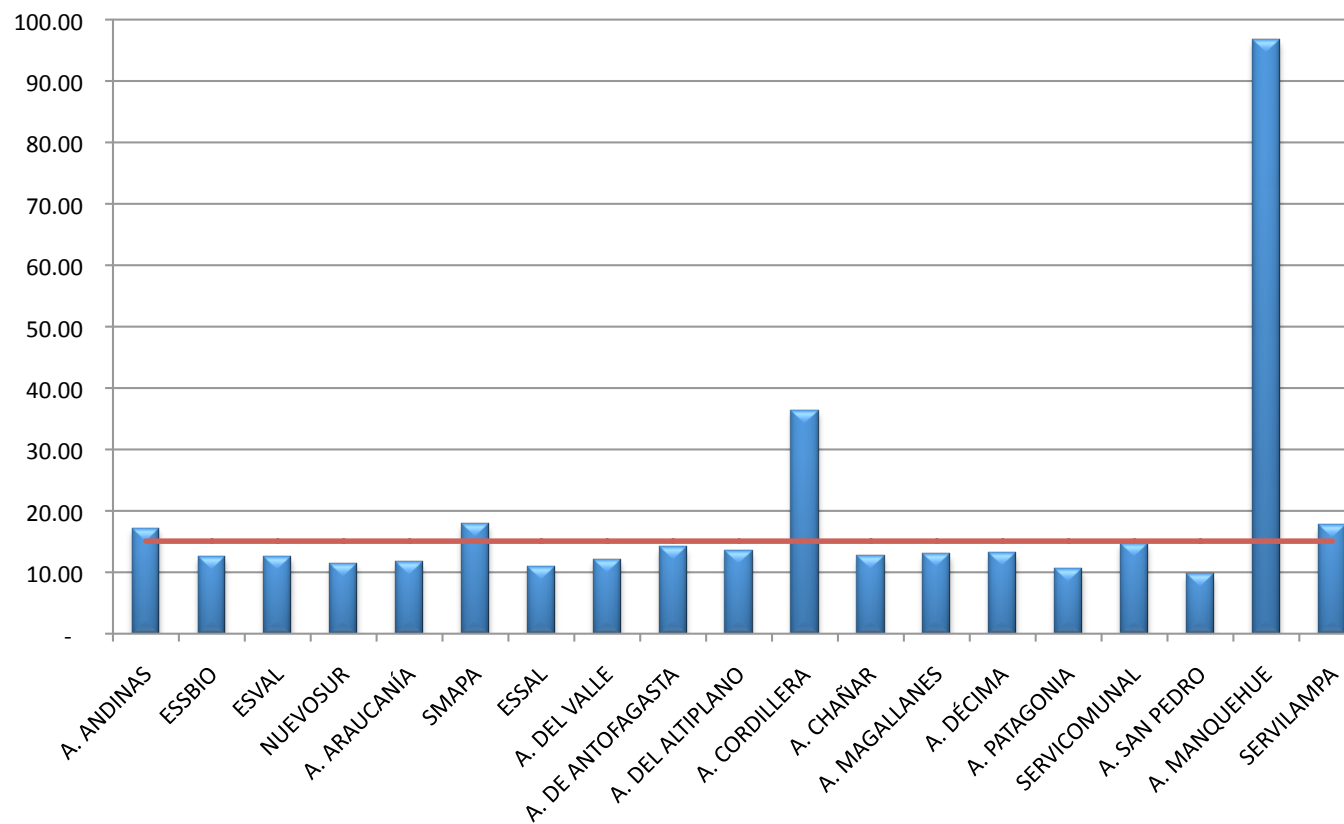


Source: MIDEPLAN (Chilean Ministry of Social Planning)

Average consumption of residential Clients



Consumo Unitario 2009 (m³/cl/mes)



Example



GOBIERNO DE
CHILE

Año 2009					
					% Subsidio
				Coyhaique	80%-50%
				Santiago	50%
Ingresos US\$	Tramo Socio-económico	Ciudad	3% Carencia US \$	cuenta de 15 m3 US\$	Subs. 2009 US\$
179	Chile Solidario	Coyhaique		46	46
300	Tramo 1	Coyhaique	9	46	37
760	Tramo 2	Coyhaique	23	46	23
300	No hay diferenciación	Santiago	9	18	9
Año 2009					
					% Subsidio
				Antofagasta	78%-50%
				Santiago	50%
Ingresos US\$	Tramo Socio-económico	Ciudad	3% Carencia US \$	cuenta de 15 m3 US\$	Subs. 2009 US\$
179	Chile Solidario	Antofagasta		43	43
295	Tramo 1	Antofagasta	9	43	34
720	Tramo 2	Antofagasta	22	43	22
300	No hay diferenciación	Santiago	9	18	9

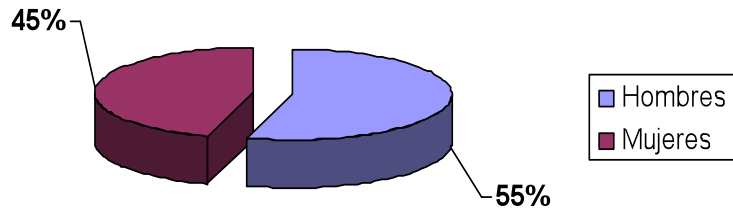
SiSS

Superintendencia de Servicios Sanitarios
Cuenta con nosotros

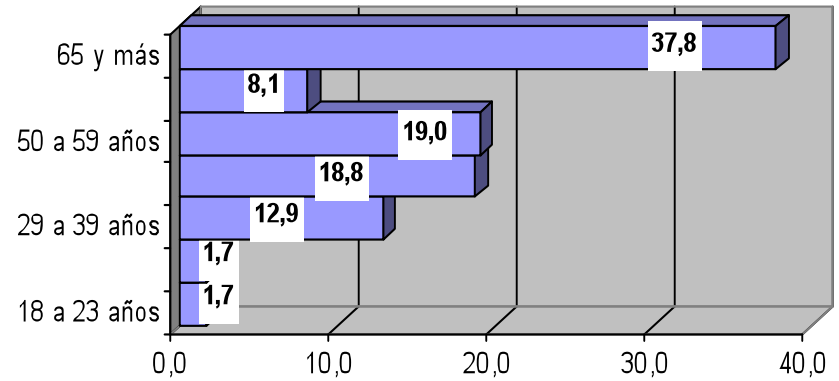
Subsidy allocation



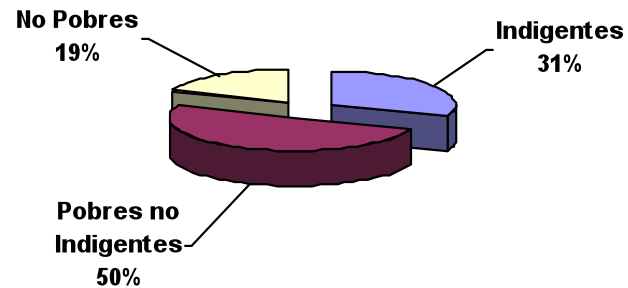
Jefes de Familia Beneficiarios de Subsidio Según Género



Jefes de Familia Beneficiarios por Edad



Beneficiarios por Línea de Pobreza





GOBIERNO DE
CHILE

Superintendencia de Servicios Sanitarios - SISS

**Chilean good practices on universal access
to water and sanitation**