



REINDEER MANAGEMENT PLAN

- > **A TOOL** FOR THE HERDING DISTRICTS DESCRIBING THE REINDEER HUSBANDRY LAND NEEDS
- > **BASIS FOR COMMUNICATION AND MUNICIPALITY PLANNING**
- > **IMPROVES DIALOGUE** WITH OTHER LAND USERS

“The right to reindeer grazing grounds applies to about 50% of Sweden’s total land area.”

REINDEER HUSBANDRY’S RIGHTS TO LAND

The right to reindeer husbandry is based on custom for time immemorial. Because the reindeer are migratory, the reindeer industry is dependent on free-roaming natural grazing.

A coherent and working green infrastructure is a prerequisite for the survival of reindeer husbandry, nature and the Sami culture. It maintains vital functions of reindeer husbandry such as grazing and grazing peace, and enables seasonal migrations between grazing grounds. Green infrastructure raises questions the Sami have always asked by spotlighting the functionality of the ecosystem, focusing on quality, natural values of the landscape and enabling the spreading and migration of species.

With operations that alter the landscape, it is not only the land that changes, but the entire ecosystem and context for those involved. Which is why any operations must be well-planned and carefully implemented to preserve the long-term entirety of the landscape.

The Sami have unique and valuable knowledge of reindeer living environments and which land areas are used during different phases of the reindeer husbandry year. Historically this information has been passed on orally from one generation to the next, very little has been written down.

DOCUMENTATION OF THE SAMI HERDING DISTRICT LANDS

During the 2000’s, the Sami herding districts (samebys) have begun establishing reindeer management plans (renbruksplan, abbreviated RBP). Management plans describe how the different herding districts use the land in such a way that others can

understand and consider, which in turn has the potential of increasing understanding with others using the same areas, for the needs of the reindeer industry.

A RBP documents the different ways land is used in reindeer husbandry. These include grazing grounds, migration routes, rest area grazing, difficult passages, installations and more, as well as a description of external factors on how the lands can be used in future reindeer husbandry. The documentation is often combined with information from GPS-fitted reindeer which describes annual reindeer migratory movements. The RBP shows the green infrastructure of reindeer husbandry.

Individual reindeer herding districts carry out the work of mapping lands and gathering material for documents that are digitally stored. The RBP is the property of the described herding district (sameby).

REINDEER MANAGEMENT PLANS ARE A BENEFIT TO FUTURE COMMUNITY PLANS

A government mandate stipulates that the Swedish Sami Parliament shall help the herding districts in drawing up RBPs. This work has evolved from a project within the Swedish Forestry Agency. The Swedish Sami Parliament is the operations manager since 2016.

REINDEER MANAGEMENT PLANS (RBP) ARE USED IN CONSULTATION AND DIALOGUE WITH FOR EXAMPLE:

- Forestry
- Mining
- Wind power
- Water power
- Cultural environments
- Mountain use issues - snow mobile and hunting
- Outdoor recreation (tourism)
- Predator issues
- Road planning
- Infrastructure
- Municipal comprehensive plans
- Environmental impact assessments, Nuclear fuel & waste management, and other planning
- Rights to reindeer husbandry disputes





A COMPREHENSIVE & CONTINUOUS WORK

The RBP is a living document that is continuously updated and developed after changing conditions.

Other actors using the land, as well as authorities, have shown a steadily increasing interest in using RBPs in consultation with herding districts.

CREATING A REINDEER MANAGEMENT PLAN

When drawing up a RBP, the herding district conducts a classification of grazing lands where different natural values from the perspective of the reindeer industry are identified using satellite images and local knowledge. Work with RBPs includes both the identification and mapping of vital grazing grounds as well as documentation of several field controls of the habitats: forests, mountains and marshlands.

Work procedure:

1. **Education** of the members of the herding districts (interpreting satellite images, GIS, GPS, data management, field inventory methods, species identification, forestry measures, communication, managing consultations).
2. **Grazing land classifications** of reindeer herding district areas into five different types for each season (grazing area, core area, key area, low-use area, areas of action).
3. **Field inventory** to describe and verify types of grazing lands and adjust boundaries.
4. **GPS** on reindeer to follow their migrations live and in the past as well as analyze their annual cycle.
5. **External factors** describe and map other land uses (forestry, mines, wind and water power, other infrastructure, agriculture, outdoor recreation, climate and weather, natural environment, cultural environment, predators).

DIGITALIZING TRADITIONAL AND MODERN KNOWLEDGE

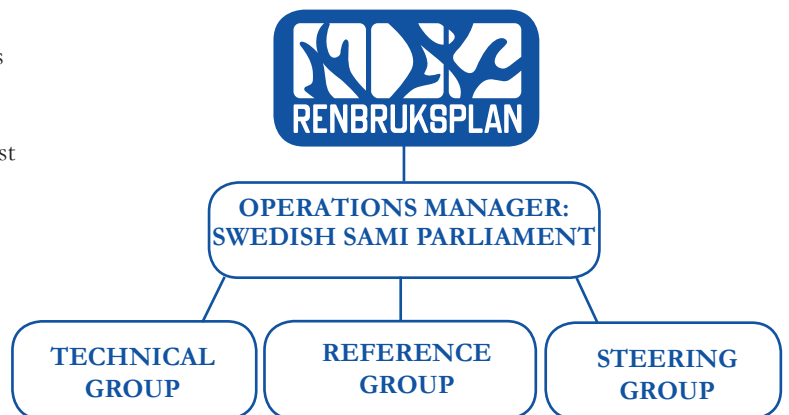
Within the work with RBPs, the Sami Parliament also works with a new web-based tool for the reindeer industry. The goal is a comprehensive solution comprised of a technical platform, an organization and different services for the construction, management and use of RBPs. The new RBP concept creates new possibilities and synergies. It will be a long-term and sustainable GIS concept for the reindeer industry in the community.

MAPS OF THE REINDEER HERDING DISTRICT AREAS

The RBPs grazing land classifications is requested of each individual herding district. General overview maps from the Sami Parliaments database iRenmark are available on the Sami Parliament website. These maps show how the reindeer industry uses land in Sweden on a general level and gives a first insight to how individual herding districts use land. Contact should always be made with the district/districts in question to guarantee the information therein.

www.sametinget.se/underlag

ORGANISATION

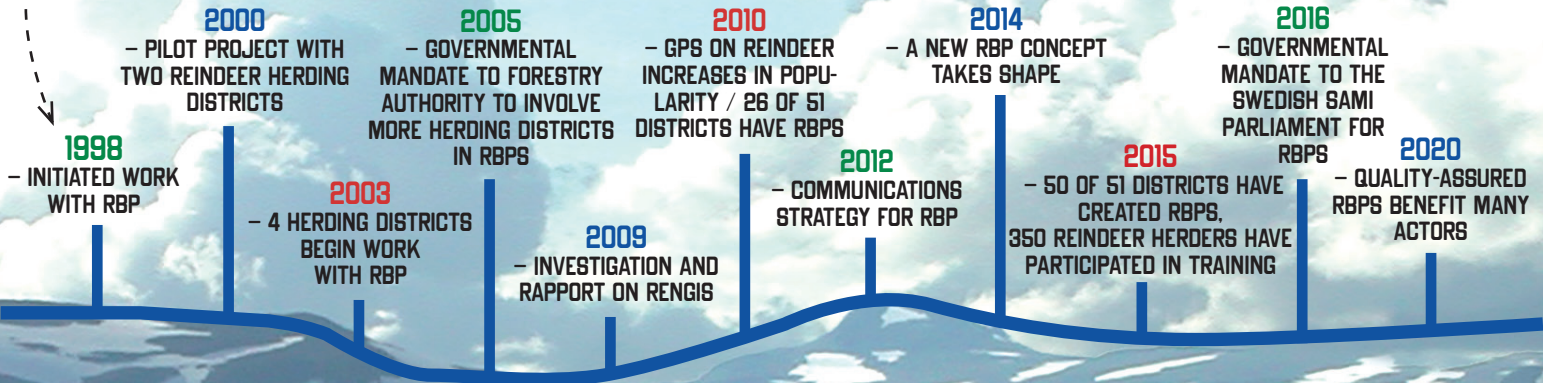


” Reindeer husbandry is not just a vital industry of northern Sweden, it is also an essential part of the Sami culture.

CONTACT WITH A REINDEER HERDING DISTRICT

If you need to come in contact with herding district about their reindeer management plan (RBP) prior to planning or consultation, contact information for each district is available on the Swedish Sami Parliament website: www.sametinget.se/samebyar
Request of grazing land classifications shall be submitted in writing to the herding district in question.

TIME LINE RBP



Production and design: Heedmark AB

CONTACT:
Leif Jougda, Operations Manager
leif.jougda@sametinget.se, 073-840 53 55

