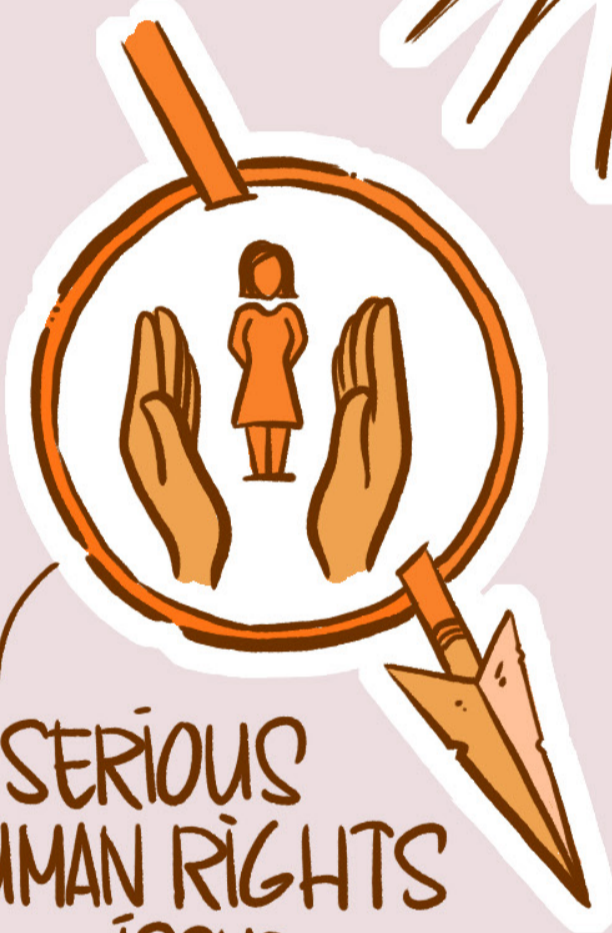


WHAT IS GENDER-BASED VIOLENCE?



GENDER-BASED VIOLENCE IS AN ACT DEEPLY ROOTED IN GENDER INEQUALITY & DIRECTED AGAINST ANOTHER PERSON BECAUSE OF THEIR GENDER



SERIOUS HUMAN RIGHTS ISSUE



VIOLATES HUMAN RIGHTS LAW



VIOLATES PRINCIPLES OF GENDER EQUALITY



OCCURS IN ALL COUNTRIES & ECONOMIC & SOCIAL GROUPS

IT UNDERMINES:



HEALTH



DIGNITY



SECURITY



AUTONOMY

RELATIONSHIP WITH COVID-19:

COVID-19 HAS DISRUPTED PROGRAMS TO END GENDER-BASED VIOLENCE BY REDUCING PREVENTION & PROTECTION EFFORTS.



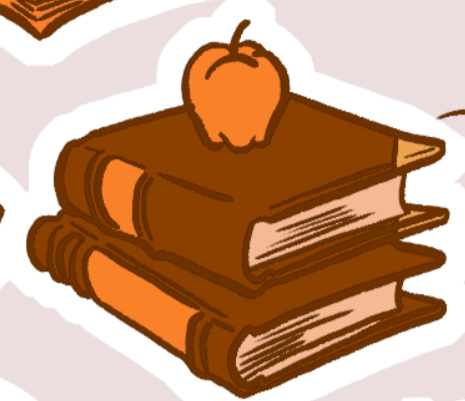
HAS DEEPEINED EXISTING INEQUALITIES



HAS EXALCERBATED KEY RISK FACTORS FOR GENDER-BASED VIOLENCE



ECONOMIC DISTRESS



SCHOOL CLOSURES



FOOD INSECURITY

ALARMING INCREASE IN MULTIPLE FORMS OF GENDER VIOLENCE!

UP BY **30%**

DESPITE STRONG BARRIERS TO REPORTING DUE TO LOCKDOWN

IT IS PROJECTED THAT THE COVID-19 PANDEMIC IS LIKELY TO CAUSE:

1/3 REDUCTION IN PROGRESS TOWARDS ENDING GENDER-BASED VIOLENCE BY 2030

AN AVERAGE **6**-MONTH LOCKDOWN IS LIKELY TO RESULT IN:

31 MILLION ADDITIONAL GENDER-BASED VIOLENCE CASES

13 MILLION MORE CHILD MARRIAGES

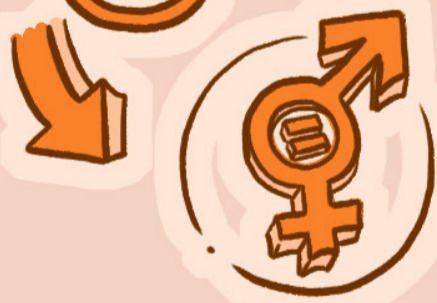
2 MILLION ADDITIONAL FGM CASES

HOW CAN WE TAKE ACTION AGAINST GENDER-BASED VIOLENCE?

PREVENT



CAMPAIGNS FOR MEN ON
CO-RESPONSIBILITY &
PREVENTION OF GENDER-BASED
VIOLENCE



PRIORITIZE GENDER EQUALITY
IN HEALTH SYSTEMS TO ENSURE
CONTINUED INCLUSIVE & SAFE
ACCESS TO MEDICAL TREATMENT &
SEXUAL REPRODUCTIVE HEALTH
SERVICES FOR ALL WOMEN & GIRLS

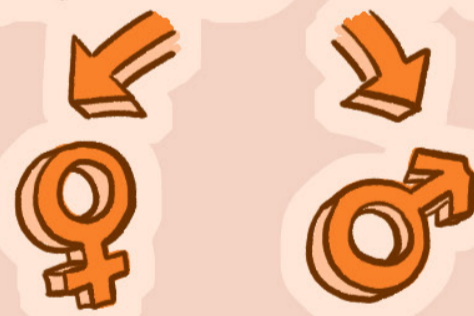


ENSURE THAT SOCIAL PROTECTION
MECHANISMS & ECONOMIC STIMULUS
PACKAGES ADEQUATELY & EFFECTIVELY
RESPOND TO THE DIFFERENTIAL NEEDS
OF WOMEN & GIRLS

COLLECT



COVID-19



ENSURE THE SYSTEMATIC
COLLECTION OF SEX-DISAGGREGATED
DATA TO UNDERSTAND THE GENDER
SPECIFIC HR IMPACT OF COVID-19



COLLECT DATA FOR IMPROVEMENT
OF SERVICES & PROGRAMS ON
GENDER-BASED VIOLENCE

HOW CAN WE TAKE ACTION AGAINST GENDER-BASED VIOLENCE?

RESPOND



INCREASE THE NUMBER OF CENTERS FOR COUNSELLING & SHELTERS AS WELL AS THE CAPACITY OF WOMEN & VICTIMS OF GENDER-BASED VIOLENCE TO ACCESS PSYCHOLOGICAL, PSYCHOSOCIAL & LEGAL SERVICES



GUARANTEE ACCESS TO JUSTICE FOR WOMEN & AUTOMATIC EXTENSION OF EXISTING PROTECTION MEASURES

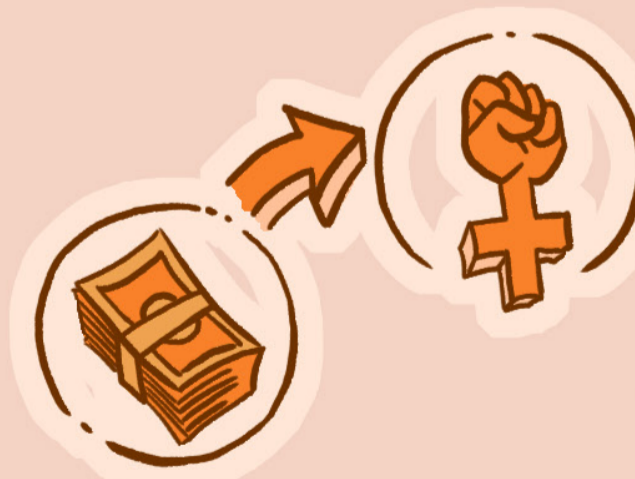


PROMOTE INCLUSIVE COVID-19 NATIONAL RESPONSES THAT ADDRESS THE SPECIFIC NEEDS OF WOMEN & GIRLS & IN PARTICULAR THOSE MOST LEFT BEHIND

FUND



PRIORITIZE FUNDING FOR THE PREVENTION & RESPONSE TO GENDER-BASED VIOLENCE IN ALL COVID-19 STRATEGIES & RECOVERY PLANS



MAKE FLEXIBLE FUNDING AVAILABLE FOR WOMEN'S RIGHTS ORGANIZATIONS WORKING IN THE INTERSECTION OF COVID-19 & GENDER-BASED VIOLENCE