



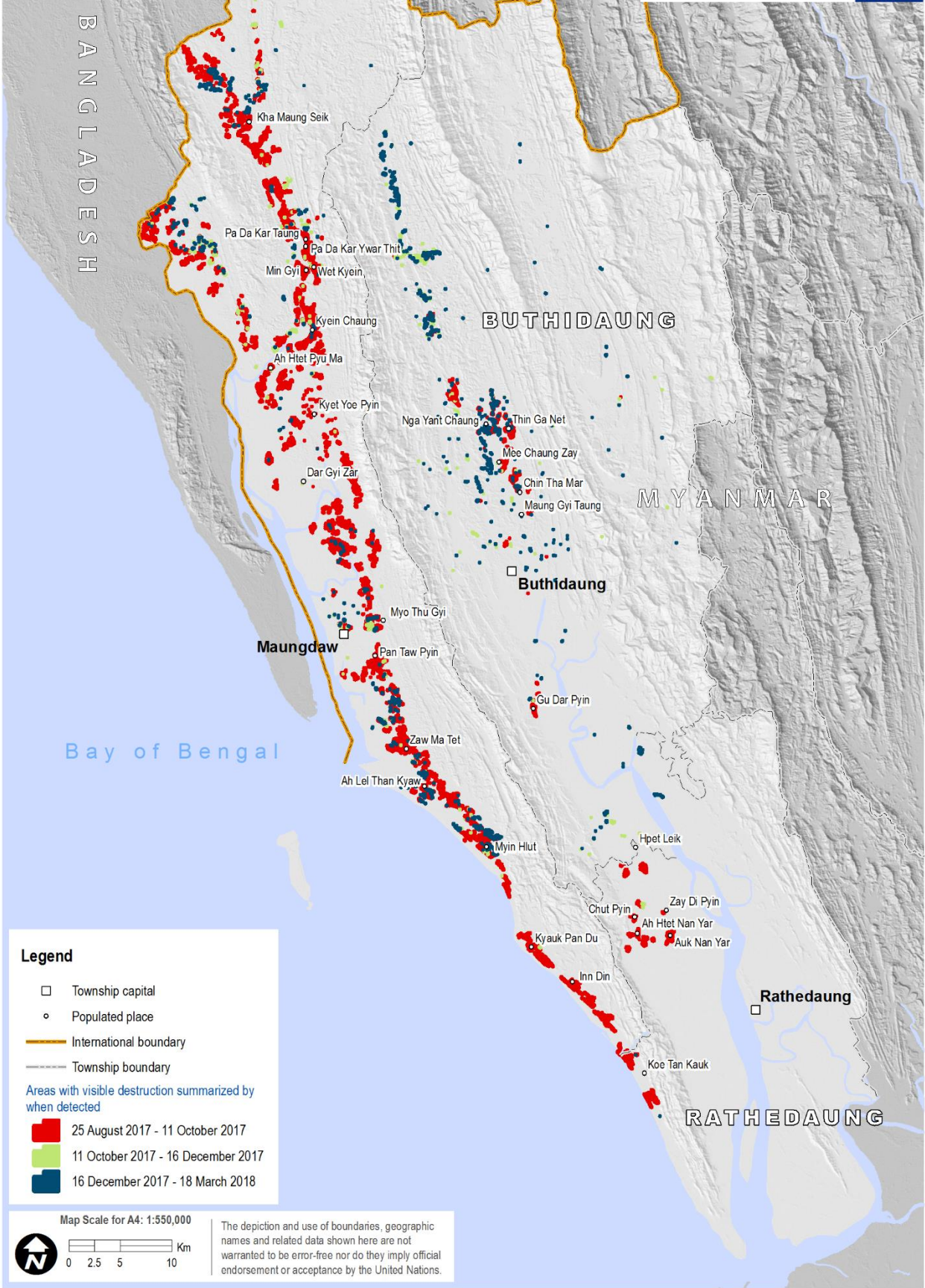
Northern Rakhine State – damage assessment map and sample satellite imagery

1. The map shows areas with visible destruction, through burning, of houses, other structures and vegetation in the three northern Townships (Maungdaw, Buthidaung and Rathedaung) of Rakhine State. The map was developed through the analysis of high-resolution satellite imagery collected on multiple dates between 25 August 2017 and 18 March 2018. Destruction is represented by coloured dots, with colours corresponding to the date range when visible destruction was detected. Due to cloud cover and satellite overpass range, damage is detected within a date range. The date range refers to damage detection, as opposed to when it actually occurred.
2. Two satellite images from Thit Tone Nar Gwa Son village tract, northern Maungdaw Township. Image 1, taken on 25 May 2017, shows intact houses and other village structures and farmland. Image 2, taken on 13 February 2018, shows burned Rohingya houses and other structures, terrain clearance and new construction. Information published by the Myanmar Government's Union Enterprise for Humanitarian Assistance, Resettlement and Development in Rakhine, dated 6 December 2017, lists the names of four ethnic Mro villages where 86 houses will be built "near Thittonena Gwa Sone village", in "Thittonena Gwa Sone" village tract. See: <http://rakhine.unionenterprise.org/latest-news-en/235-nearly-800-houses-under-construction-for-displaced-villagers-in-maungdaw>
3. Two satellite images from Myin Hlut village tract, southern Maungdaw Township. Image 3, taken on 9 January 2018, shows burned Rohingya houses, other village structures and vegetation (within the red lines), and also remaining intact houses, structures and vegetation (outside of the red lines). Image 4, taken on 13 February 2018, shows all houses, structures and vegetation cleared.
4. Two satellite images from Inn Din village tract, southern Maungdaw Township. Image 5, taken on 9 October 2017, shows the eastern and southern Rohingya settlements burned, while the non-Rohingya western settlement remains intact. A Buddhist pagoda is shown within the western settlement. Image 6, taken on 16 February 2018, shows visible terrain clearance and new construction, while the western settlement remains intact.

Attribution for use of map or images:

Image copyright or image courtesy – DigitalGlobe

Source – UNITAR-UNOSAT



Legend

- Township capital
- Populated place
- International boundary
- - - Township boundary

Areas with visible destruction summarized by when detected

- 25 August 2017 - 11 October 2017
- 11 October 2017 - 16 December 2017
- 16 December 2017 - 18 March 2018

Map Scale for A4: 1:550,000



The depiction and use of boundaries, geographic names and related data shown here are not warranted to be error-free nor do they imply official endorsement or acceptance by the United Nations.

Thit Tone Nar Gwa Son, northern Maungdaw Township

IMAGE 1: 25 May 2017



IMAGE 2: 13 February 2018



Myin Hlut, southern Maungdaw Township

IMAGE 3: 9 January 2018

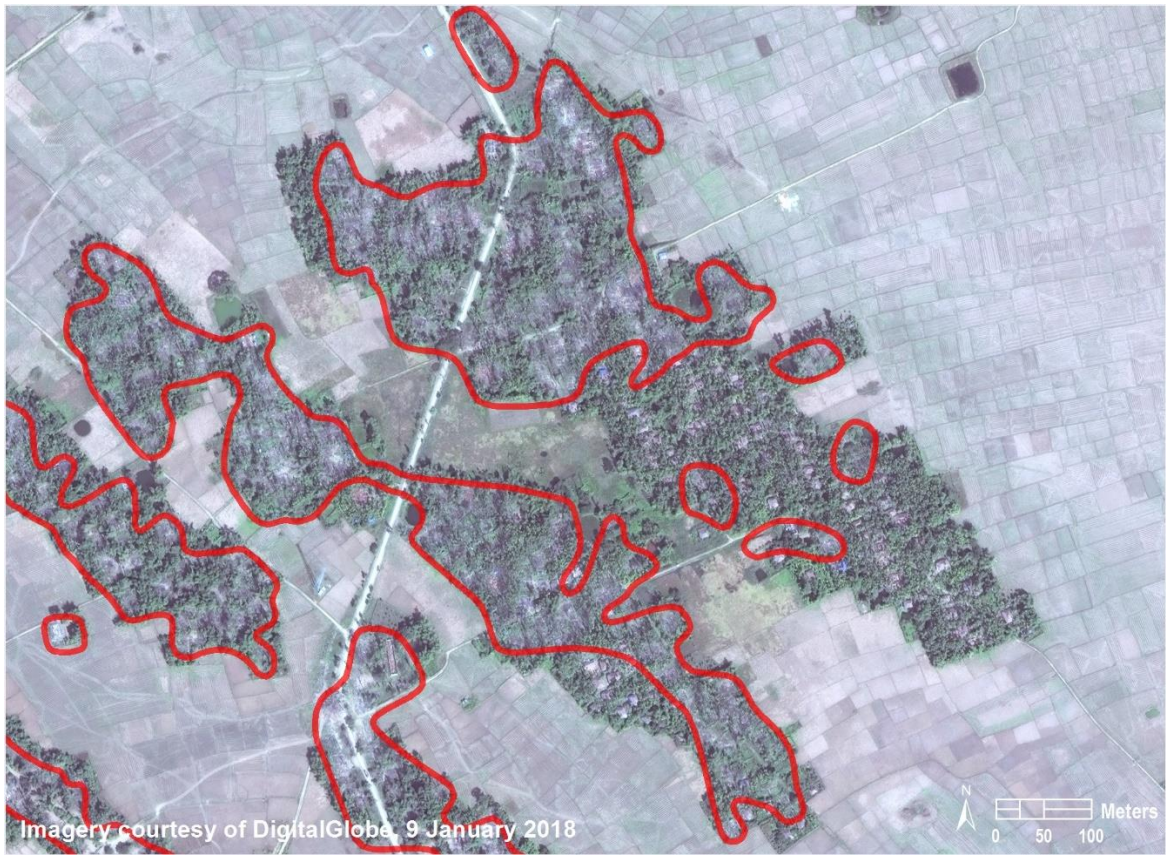


IMAGE 4: 13 February 2018



Inn Din, southern Maungdaw Township

IMAGE 5: 9 October 2017



IMAGE 6: 16 February 2018

