



Governance Structure of MEHL and MEC

Independent International Fact-Finding Mission on Myanmar

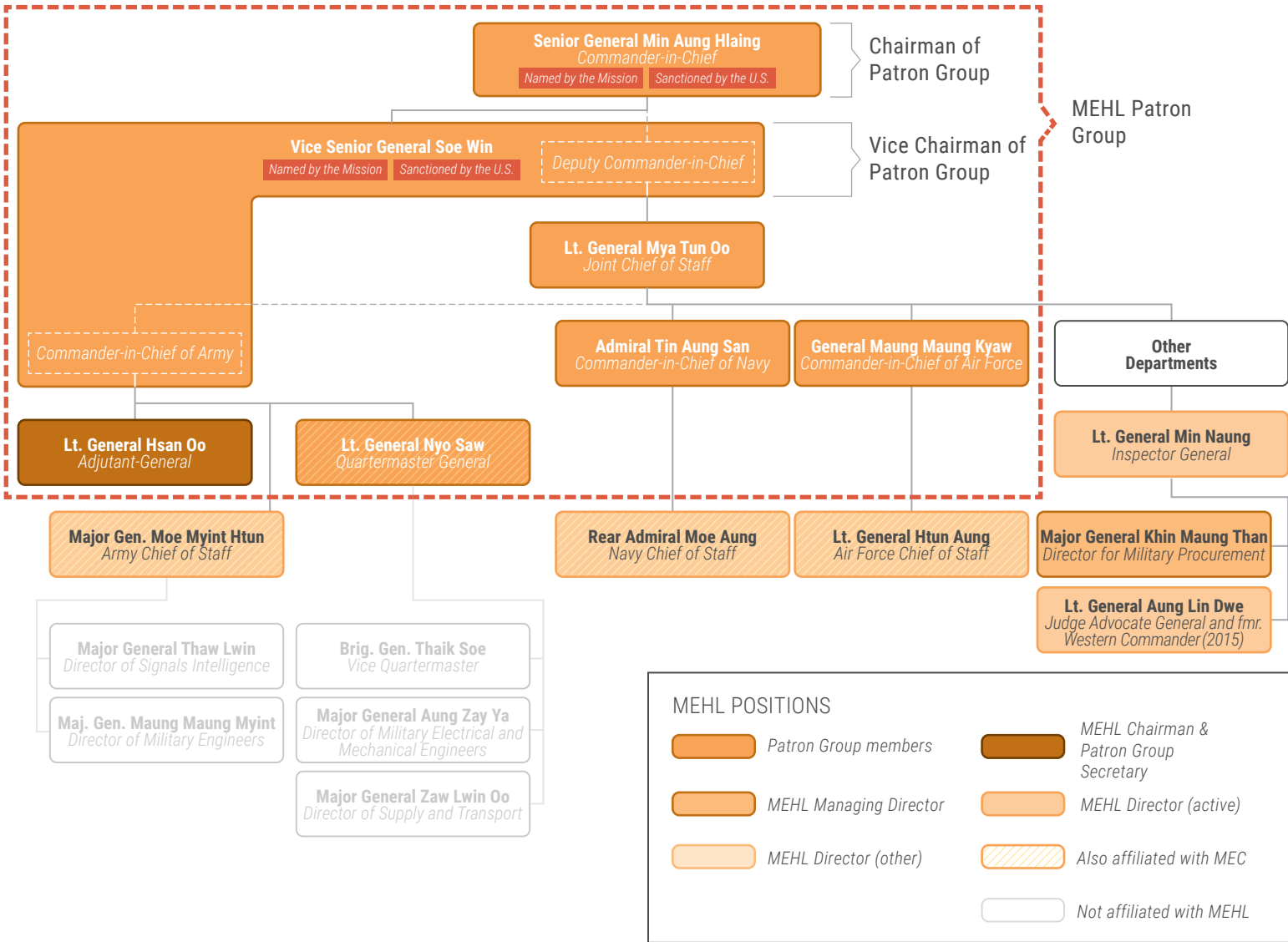
August 2019

Current high-ranking Tatmadaw officials, including those accused of some of the gravest crimes under international law, have significant control and influence over Myanmar Economic Holdings Limited (MEHL). Commander-in-Chief Senior General Min Aung Hlaing and Deputy Commander-in-Chief Vice Senior General Soe Win lead the Patron Group of

MEHL; the Mission has on reasonable grounds identified both as being responsible for crimes under international law. This diagram illustrates that the highest levels of Tatmadaw leadership have significant roles in the governance and ownership of MEHL.

TATMADAW LEADERS IN POSITIONS AT MEHL, LTD.

Known hierarchy of the Tatmadaw



Other parts of government or Tatmadaw hierarchy



Governance Structure of MEHL and MEC

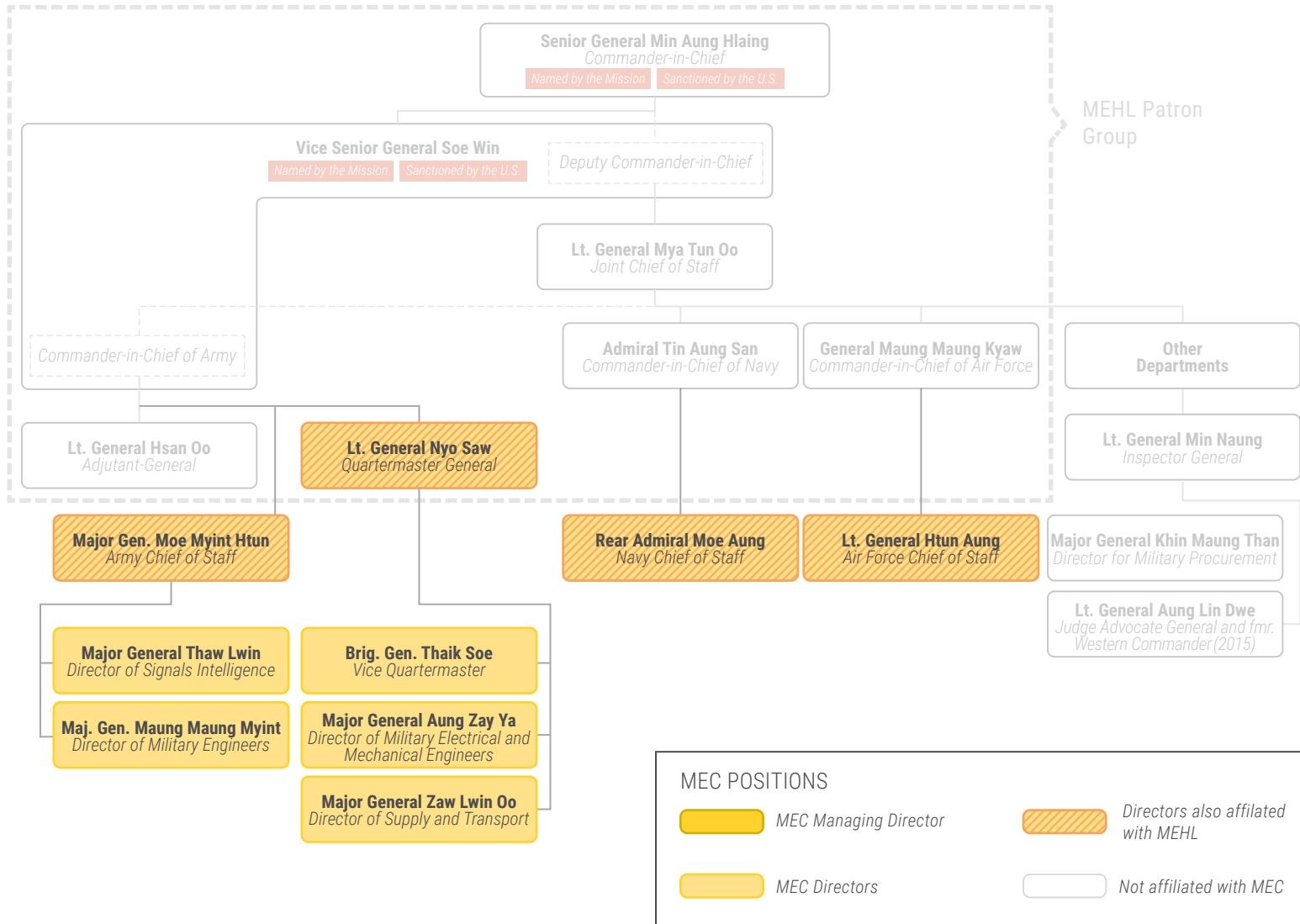
Independent International Fact-Finding Mission of Myanmar

Myanmar Economic Corporation (MEC) is fully owned and controlled by the Ministry of Defense and is a direct source of revenue for the Tatmadaw. MEC is controlled by the Quartermaster General's Office. MEC also has a wholly-owned private subsidiary, MEC Limited. The Board of MEC Limited includes the Chiefs of Staff of the Army, Navy and Air Force, the Defense Permanent Secretary, and the Directors of the Directorates of Supply and

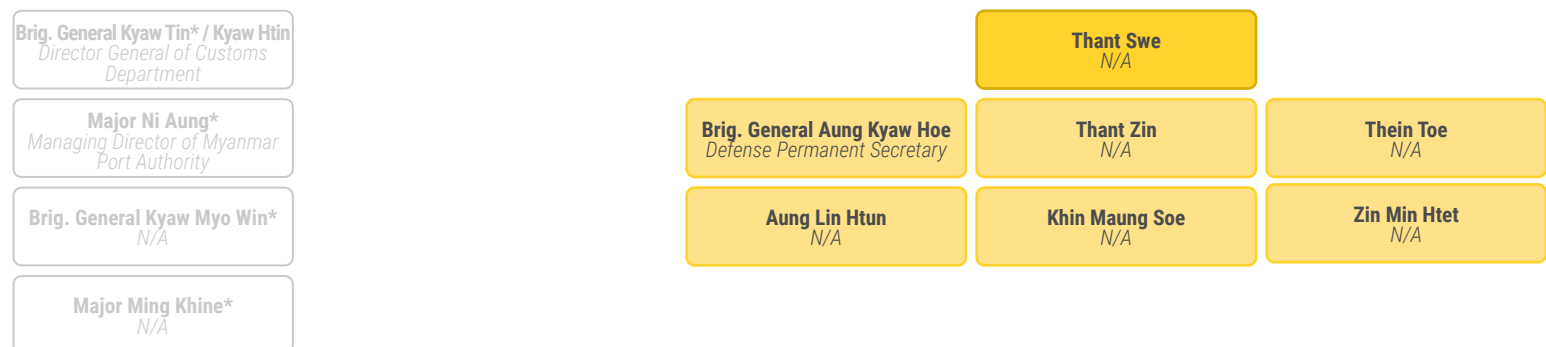
Transport, Signals Intelligence, and Electrical and Mechanical Engineers. Khin Maung Soe, who is sanctioned by the European Union, United States, United Kingdom, and Australia, serves as a MEC Director. This diagram illustrates that the high level operational leadership of the Tatmadaw controls MEC.

TATMADAW LEADERS IN POSITIONS AT MEC, LTD.

Known hierarchy of the Tatmadaw



Other parts of government or Tatmadaw hierarchy



* Retired